

Owner's manual

E

DUCATI 749DARK



E

Hearty welcome among Ducati fans! Please accept our best compliments for choosing a Ducati motorcycle. We think you will ride your Ducati motorcycle for long journeys as well as short daily trips. Ducati Motor Holding s.p.a wishes you smooth and enjoyable riding.

We are steadily doing our best to improve our "Technical Assistance" service. For this reason, we recommend you to strictly follow the indications given in this manual, especially for motorcycle running-in. In this way, your Ducati motorbike will surely give you unforgettable emotions.

For any servicing or suggestions you might need, please contact our authorized service centres.

Enjoy your ride!



Note

Ducati Motor Holding S.p.A. declines any liability whatsoever for any mistakes incurred in drawing up this manual. The information contained herein is valid at the time of going to print. Ducati Motor Holding S.p.A. reserves the right to make any changes required by the future development of the above-mentioned products.

For your safety, as well as to preserve the warranty, reliability and worth of your motorcycle, use original Ducati spare parts only.



Warning

This manual forms an integral part of the motorcycle and - if a transfer of title occurs - must always be handed over to the new owner.

TABLE OF CONTENTS

E

General 6

Warranty 6

Symbols 6

Useful information for safe riding 7

Carrying the max load allowed 8

Identification data 9

Controls 10

Position of motorcycle controls 10

Instrument panel 11

LCD - main functions 12

LCD - how to set/display parameters 14

The immobilizer system 19

Keys 19

Code card 20

Procedure to disable immobilizer engine block through
throttle twistgrip 21

Duplicate keys 22

Ignition switch and steering lock 23

Left switch 24

Clutch lever 25

Cold start lever 26

Right switch 27

Throttle twistgrip 27

Front brake lever 28

Rear brake pedal 29

Gear change pedal 30

Gear change pedal adjustment 31

Rear brake pedal adjustment 32

Main components and devices 33

Location 33

Tank filler plug 34

Seat catch and helmet hook 35

Side stand 37

Front fork adjusters 38

Shock absorber adjusters 40

Directions for use 41

Running-in recommendations 41

Pre-ride checks 43

Starting the engine 44

Moving off 46

Braking 46

Stopping the motorcycle 47

Parking 47

Refueling 48

Tool kit and accessories 49

Main maintenance operations 50

- Removing the fairing 50
- Checking and topping up the coolant level 53
- Checking brake and clutch fluid level 55
- Checking brake pads for wear 56
- Lubricating cables and joints 57
- Throttle cable tension adjustment 58
- Charging the battery 59
- Chain tension inspection 60
- Chain lubrication 60
- Changing the high and low beam bulbs 61
- Changing the parking light bulb 63
- Front turn indicators 64
- Rear turn indicators 64
- Stop light 65
- Number plate light 65
- Beam setting 66
- Rear view mirror adjustment 67
- Tubeless tyres 68
- Checking engine oil level 70
- Cleaning and replacing the spark plugs 71
- Cleaning the motorcycle 72
- Storing the bike away 73
- Important notes 73

Technical data 74

- Overall dimensions 74
- Weights 74
- Top-ups 75
- Engine 76
- Timing system 76
- Performance data 77
- Spark plugs 77
- Brakes 77
- Transmission 78
- Frame 79
- Wheels 79
- Tyres 79
- Suspensions 80
- Exhaust system 80
- Available colours 80
- Electric system 81

For United States of America version only 85

Routine maintenance record 94

GENERAL

E

Warranty

In your own interest, and in order to guarantee product reliability, you are strongly advised to refer to a Ducati Dealer or Authorized Workshop for any servicing requiring particular technical expertise. Our highly skilled staff have access to the implements required to perform any servicing job at best, using Ducati original spare parts only as the best guarantee for full interchangeability, smooth running and long life.

All Ducati motorcycles come with a "Warranty Card". However, warranty does not apply to the motorcycles used in competitions. No motorcycle part may be tampered with, altered, or replaced with parts other than original Ducati spare parts during the warranty period, or the warranty will be automatically invalidated.

Symbols

Ducati Motor Holding S.p.A. advises you to read this manual carefully so as to become familiar with your motorcycle. In case of any doubts, please call a Ducati Dealer or Authorized Workshop. The information contained herein will prove useful on your trips - and Ducati Motor Holding S.p.A. wishes you smooth, enjoyable riding - and will help you keep the performance of your motorcycle unchanged for a long time.



Warning

Failure to comply with these instructions may put you at risk and lead to severe injury or death.



Important

Possibility of damaging the motorcycle and/or its components.



Note

Additional information concerning the job being carried out.

The terms **right** and **left** are referred to the motorcycle viewed from the riding position.

Useful information for safe riding



Warning

Read this section before riding your motorcycle.

Accidents are frequently due to inexperience. Always make sure you have your licence with you when riding; you need a valid licence to be entitled to ride your motorcycle.

Do not lend your motorcycle to inexperienced riders or who do not hold a valid licence.

Both rider and pillion passenger must **always** wear suitable gear and a safety helmet.

Wear proper clothing, with no loose items or accessories that may become tangled in the controls or limit your zone of vision.

Never start or run the engine indoors. Exhaust gases are poisonous and may lead to loss of consciousness or even death within a short time.

Both rider and pillion passenger should keep their feet on the footpegs when the motorcycle is in motion.

Always hold the handlebars firmly with both hands so you will be ready for sudden changes of direction or in the road surface. The pillion passenger should **always** hold on to the suitable belt on the rear seat with both hands.

Ride within the law and observe national and local rules. Always respect speed limits where these are posted. However, **always** adjust your speed to the visibility, road and traffic conditions you are riding in.

Always signal your intention to turn or pull to the next

lane in good time using the suitable turn indicators.

Be sure you are clearly visible and do not ride within the blind spot of vehicles ahead.

Be very careful when tackling road junctions, or when riding in the areas near exits from private grounds, car parks or on slip roads to access motorways.

Always turn off the engine when refueling.

Be extremely careful not to spill fuel on the engine or on the exhaust pipe when refueling.

Do not smoke when refueling.

While refueling, you may inhale noxious fuel vapors.

Should any fuel drops be spilled on your skin or clothing, immediately wash with soap and water and change your clothing.

Always remove the key when you leave your motorcycle unattended.

The engine, exhaust pipes, and mufflers stay hot for a long time.



Warning

The exhaust system might be hot, even after engine is switched off; pay particular attention not to touch exhaust system with any body part and do not park the vehicle next to inflammable material (wood, leaves etc.).

Park your motorcycle where no one is likely to hit it and use the side stand.

Never park on uneven or soft ground or your motorcycle may fall over.

Carrying the maximum load allowed

Your motorcycle is designed for long-distance riding, carrying the maximum load allowed in full safety. Even weight distribution is critical to preserving safety features and avoiding trouble when performing sudden manoeuvres or riding on bumpy roads.

E

Information about carrying capacity

The total weight of the motorcycle in running order including rider, pillion passenger, luggage and additional accessories should not exceed 375 Kg.

Arrange your luggage or heavy accessories in the lowest possible position and close to motorcycle centre.

Be sure to secure the luggage to the supports provided on the motorcycle as firmly as possible. Improperly secured luggage may affect stability.

Never fix bulky or heavy objects to the handlebar or to the front mud guard as this would affect stability and cause danger.

Do not insert any objects you may need to carry into the gaps of the frame as these may foul moving parts.

Make sure the tyres are inflated to the proper pressure indicated at page 68 and that they are in good condition.

Identification data

All Ducati motorcycles have two identification numbers, for frame (fig. 1) and engine (fig. 2).

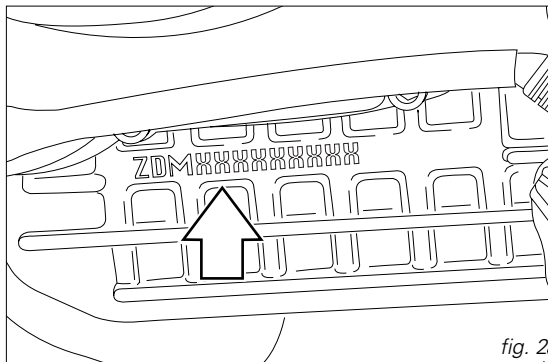
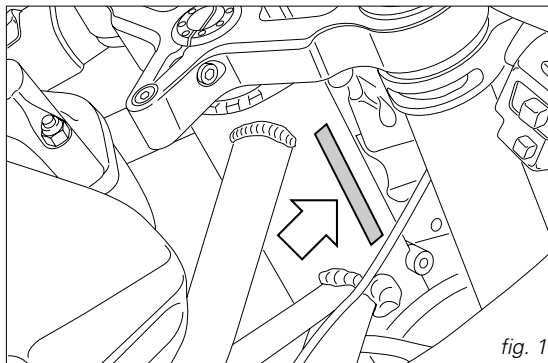
Frame number

Engine number



Note

These numbers identify the motorcycle model and are required when ordering spare parts.



CONTROLS

E



Warning

This section details the position and function of all the controls you need to drive your motorcycle. Be sure to read this information carefully before you use the controls.

Position of motorcycle controls (fig. 3)

- 1) Instrument panel.
- 2) Key-operated ignition switch and steering lock.
- 3) Left switch.
- 4) Clutch lever.
- 5) Cold start control.
- 6) Right switch.
- 7) Throttle twistgrip.
- 8) Front brake lever.
- 9) Gear change pedal.
- 10) Rear brake pedal.

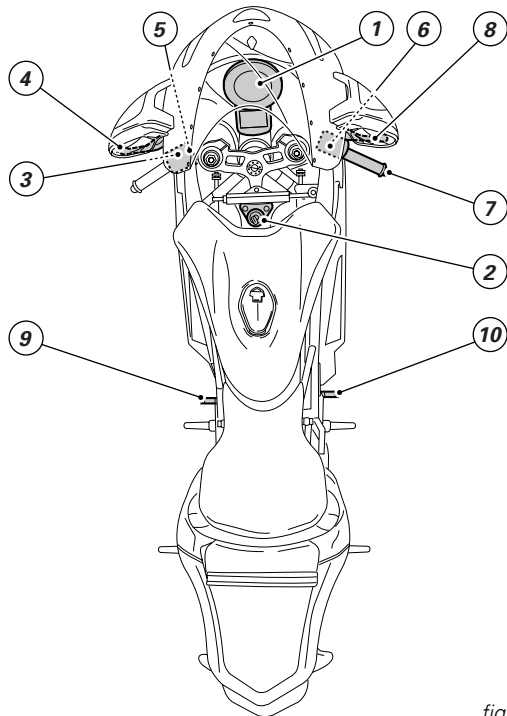


fig. 3