

# CHAPTER 1

## GENERAL INFORMATION / ROUTING

GENERAL INFORMATION . . . . .	1.3
SERVICE RULES . . . . .	1.3
SAFETY INFORMATION . . . . .	1.4
UNDERSTANDING SAFETY LABELS & INSTRUCTIONS . . . . .	1.4
GENERAL SPECIFICATIONS - VEGAS . . . . .	1.5
VEGAS SPECIFICATIONS . . . . .	1.5
VEGAS SPECIFICATIONS (CONT.) . . . . .	1.6
GENERAL SPECIFICATIONS-KINGPIN . . . . .	1.7
KINGPIN SPECIFICATIONS . . . . .	1.7
KINGPIN SPECIFICATIONS (CONT.) . . . . .	1.8
VEHICLE LOADING . . . . .	1.9
WEIGHT CAPACITY - TOP BOX AND SADDLEBAGS . . . . .	1.9
LOADING EXAMPLES FOR GROSS VEHICLE WEIGHT RATING (GVWR) - VEGAS . . . . .	1.9
LOADING EXAMPLES FOR GROSS VEHICLE WEIGHT RATING (GVWR) - KINGPIN . . . . .	1.10
REFINISHING . . . . .	1.11
VICTORY TOUCH-UP AND REFINISHING PAINT . . . . .	1.11
VICTORY DETAIL AND FINISH RESTORER KITS . . . . .	1.11
PAINTING TERMS . . . . .	1.11
PAINT COLORS BY MODEL . . . . .	1.12
PAINT COLOR CODES . . . . .	1.14
VEHICLE INFORMATION . . . . .	1.15
VEHICLE IDENTIFICATION NUMBER (VIN) . . . . .	1.15
MODEL NUMBER . . . . .	1.15
VIN NUMBER LOCATION . . . . .	1.16
MANUFACTURER LABEL . . . . .	1.16
ENGINE NUMBER LOCATION . . . . .	1.16
KEY IDENTIFICATION NUMBER . . . . .	1.16
PUBLICATIONS & TECHNICAL LITERATURE . . . . .	1.17
PUBLICATION PART NUMBERS . . . . .	1.17
MATERIAL SAFETY DATA SHEET (MSDS) . . . . .	1.17
BREAK IN PERIOD . . . . .	1.18
BREAK-IN PROCEDURE . . . . .	1.18
EMISSIONS . . . . .	1.19
EMISSION CONTROL SYSTEMS . . . . .	1.19
EMISSION SOURCES . . . . .	1.19
EXHAUST EMISSION CONTROL . . . . .	1.19
NOISE EMISSION CONTROL SYSTEM . . . . .	1.19
CRANKCASE EMISSION CONTROL . . . . .	1.19
EVAPORATIVE EMISSION CONTROL (CALIFORNIA MODELS) . . . . .	1.19
INSTRUMENTS . . . . .	1.20
SPEEDOMETER . . . . .	1.20
TACHOMETER . . . . .	1.20
ODOMETER . . . . .	1.20
TRIP ODOMETER . . . . .	1.20
INDICATOR LIGHTS . . . . .	1.21



# GENERAL INFORMATION / ROUTING

---

SPECIAL SERVICE TOOLS . . . . .	1.22
GENERAL & PRECISION MEASUREMENT . . . . .	1.22
TUNE UP & MAINTENANCE . . . . .	1.22
ELECTRICAL . . . . .	1.22
ENGINE, CLUTCH, & TRANSMISSION . . . . .	1.23
STEERING & SUSPENSION . . . . .	1.23
WHEEL & TIRE . . . . .	1.24
FUEL SYSTEM & FUEL INJECTION . . . . .	1.24
TOOL ORDERING INFORMATION . . . . .	1.24
TRANSPORTING AND SECURING THE MOTORCYCLE . . . . .	1.25
GUIDELINES . . . . .	1.25
ROUTING DIAGRAMS . . . . .	1.26
WIRE HARNESS - RIGHT REAR FRAME . . . . .	1.26
WIRE HARNESS - RIGHT SIDE . . . . .	1.27
WIRE HARNESS - LEFT SIDE . . . . .	1.28
WIRE HARNESS - UNDER SEAT . . . . .	1.29
WIRE HARNESS CONNECTOR LOCATIONS . . . . .	1.30
WIRE HARNESS FRONT VIEW . . . . .	1.30
WIRE HARNESS RIGHT SIDE VIEW / TOP VIEW . . . . .	1.31
REFERENCE . . . . .	1.32
SAE TAP DRILL SIZES . . . . .	1.32
METRIC TAP DRILL SIZES . . . . .	1.32
DECIMAL EQUIVALENTS . . . . .	1.32
FAHRENHEIT TO CELSIUS . . . . .	1.33
MEASUREMENT CONVERSION CHART . . . . .	1.33



## **GENERAL INFORMATION**

### **SERVICE RULES**

In order to perform service work efficiently and prevent costly errors, technicians should read the text in this manual and familiarize themselves with the procedures before beginning. Notes, Cautions and Warnings have been included for clarification of text and safety concerns. Knowledge of mechanical theory, tool use and shop procedures are necessary to perform some procedures in this manual safely and correctly.

Use only genuine Victory service parts, including fasteners that require replacement if removed. Do NOT substitute fasteners or hardware.

Cleanliness of parts and tools as well as the work area is of primary importance. Dirt and foreign matter will cause damage to precision parts. Clean the motorcycle before beginning service. Clean all parts before installing.

If difficulty is encountered in removing or installing a component, look to see if a cause for the difficulty can be found. If it is necessary to tap the part into place, use a soft face hammer and tap lightly.

Always follow torque specifications as outlined throughout this manual. Incorrect torquing may lead to serious machine damage or in the case of steering, driveline, and chassis components, can result in loss of control during operation of the motorcycle, which may result in severe personal injury or death.

If a torquing sequence is indicated for nuts, bolts or screws of a certain component, start all fasteners and hand tighten. Following the method and sequence indicated, tighten evenly to the specified torque value. When removing nuts, bolts or screws from a component with several fasteners, loosen them all about 1/4 turn before removing them to prevent distortion of that component.

Replace all oil seals, sealing washers, gaskets, and O-rings with new ones during assembly. Be sure the mating surfaces for the gasket are clean and smooth to avoid leaks and maintain specified tolerances.

Some procedures require removal of retaining rings or clips. Removal can weaken and deform these parts, therefore, they should always be replaced with new parts. When installing new retaining rings and clips, use care not to expand or compress them beyond what is required for installation.

Victory lubricants and greases have been specially formulated to provide maximum performance and protection when applied properly. In some applications, warranty coverage may be void if improper lubricants are used.

Parts requiring grease should be cleaned thoroughly and fresh grease applied before reassembly. Deteriorating grease loses lubricity and may contain abrasive foreign matter.

Always replace locking hardware such as lock nuts or lock washers, fasteners that have pre-applied locking agent, or any other fasteners as noted in this service manual with genuine Victory hardware from an authorized Victory dealer.

Working with batteries can be hazardous. Review all battery warnings and cautions. See "BATTERY SAFETY" on page 16.2.



# GENERAL INFORMATION / ROUTING

## SAFETY INFORMATION

### Understanding Safety Labels & Instructions

READ AND BECOME FAMILIAR WITH ALL WARNING AND CAUTION SYMSBOLS AND STATEMENTS LISTED BELOW AND IN THE TEXT OF THIS MANUAL BEFORE YOU BEGIN WORK.



This is the safety alert symbol. When you see this symbol on the vehicle or in this manual, be alert to the potential for personal injury. Your safety is involved!

#### **WARNING**

Indicates a hazardous situation, which, if not avoided, could result in death or serious injury.

#### **CAUTION**

Indicates a hazardous situation, which, if not avoided, could result in minor or moderate injury.

#### **NOTICE:**

Indicates a situation, which, if not avoided, could result in damage to the motorcycle.

#### **WARNING**

Gasoline is extremely flammable and explosive under certain conditions.

- Always stop the engine and refuel outdoors or in a well ventilated area.
- Do not smoke or allow open flames or sparks in or near the area where refueling is performed or where gasoline is stored.
- Do not overfill the tank. Do not fill the tank neck above the fuel tank insert. Leave air space to allow for fuel expansion.
- If you get gasoline in your eyes or if you swallow gasoline, see your doctor immediately. Never try to syphon gasoline using mouth suction.
- If you spill gasoline on your skin or clothing, immediately wash it off with soap and water and change clothing.
- Never start the engine or let it run in an enclosed area. Engine exhaust fumes are poisonous and can cause loss of consciousness or death in a short time.

#### **WARNING**

The engine exhaust from this product contains chemicals known to cause cancer, birth defects or other reproductive harm.

#### **WARNING**

Improper repairs or service can create unsafe conditions that may cause severe personal injury or death.

#### **WARNING**

The engine and exhaust components on this product become very hot during operation and remain so for a period of time after the engine is stopped.

#### **WARNING**

Never run the engine in an enclosed area without a properly functioning exhaust gas evacuation system connected to the product.

#### **WARNING**

Modifications to this motorcycle not approved by Victory may cause loss of performance, excessive emissions, and make the machine unsafe for use.

#### **WARNING**

Brake fluid is poisonous.  
**KEEP OUT OF REACH OF CHILDREN.**

#### **WARNING**

Wear insulated protection for hands and arms or wait until hot components have cooled sufficiently before working on the product.

#### **WARNING**

Brake fluid is poisonous. Do not ingest or allow brake fluid to contact eyes. Always wear eye protection when working with brake fluid.

#### **WARNING**

Battery electrolyte is poisonous. It contains sulfuric acid. Serious burns can result from contact with skin, eyes or clothing.

#### **WARNING**

Care should be taken to be sure the motorcycle will not tip or fall while elevated. Severe personal injury or death could occur if the motorcycle tips or falls.

#### **NOTICE**

Brake fluid will damage plastic, painted and rubber parts. Protect these surfaces whenever the brake system is being serviced.

**GENERAL SPECIFICATIONS - VEGAS**

**Vegas Specifications**

		<b>2008 Vegas [Vegas 8-Ball]</b>	<b>2008 Vegas Low</b>
<b>C A P A C I T I E S &amp; D I M E N S I O N S</b>	Oil Capacity	5.0 Qt (4.75 ltr) (Approximately 4.65 qts.or 4.25 ltr at oil & filter change)	
	Fuel Capacity	4.5 US Gal (17 ltr) (.8 U.S. gal / 3.0 ltr reserve)	
	Fuel Type / Octane Minimum	Premium Unleaded / 92 Octane	
	Wheelbase	66.3 in (168.4 cm)	
	Dry Weight	658 lbs (298 kg) [652 lbs (296 kg)]	651 lbs (295 kg)
	Wet Weight	686 lbs (311 kg) [680 lbs (308.4 kg)]	679 lbs (308 kg)
	Gross Vehicle Weight Rating	1151 lbs. (522 kg)	1134 lbs. (514 kg)
	Maximum Load Capacity*	465 lbs. (211 kg) [465 lbs. (211 kg)]	455 lbs. (206 kg)
	Overall Length	96.0 in (243.9 cm)	
	Overall Width	38 in (97 cm)	38 in (97 cm)
	Overall Height	49.40 in (125.4 cm)	49.40 in (125.4 cm)
	Seat Height	26.5 in (67.3 cm)	25.2 in (64.0 cm)
	Ground Clearance	5.8 in (14.8 cm)	5.3 in (13.5 cm)
	Passenger Capacity	1 [ 8-Ball - 0 ]	0
	Rake / Trail	32.9 Degrees / 4.9 in. (12.6 cm)	
<b>E N G I N E</b>	Engine Type	Freedom <sup>®</sup> 100/6 V-Twin [8-Ball 100 / 5]	Freedom <sup>®</sup> 100/6 V-Twin
	Engine Configuration	50° SOHC Transverse V-Twin 4 Stroke	
	Engine Displacement	1634cc / 100 cubic	
	Engine Cooling System	Air / Oil	
	Compression Ratio	8.7:1	
	Compression Pressure	185 - 225 psi (1275 - 1551 kPa)	
	Valves Train	4 Valves per cylinder. Hydraulic Lifters & Cam Chain Adjusters (No Adjustment)	
	Bore x Stroke	101 x 102 mm	
	Starter	Electric / Direct Drive	
	Fuel System / Throttle Body	Electronic Fuel Injection / 45 mm	
	Exhaust System Type	Dual - Large bore slash cut with common volume	
	Lubrication System	Wet Sump	
	Spark Plug Type (Gap)	NGK DCPR6E (.032-.036 in. / 0.8-.9 mm)	
Dry Weight (Engine)	265 lbs. (120 Kg)		
<b>B R A K E</b>	Brake Type (Front / Rear)	Disc / Disc	
	Front Brake	Single 300 x 5 mm Floating Disc with 4 Piston Caliper	
	Rear Brake	Single 300 x 5 mm Floating Disc with 2 Piston Caliper	

All specifications are for standard Victory Vegas, Vegas 8-Ball, and Vegas Low models. Specifications may change with the addition of custom order options and / or accessories. Polaris Sales Inc. reserves the right without prior notice to discontinue at any time at its discretion any of the items herein or change specifications or designs without incurring any obligation to the customer.

\* Maximum load capacity includes the weight of all additional accessories, options, cargo, rider with riding gear, and passenger with riding gear. See GVWR and Vehicle Loading information beginning on page 1.9.



# GENERAL INFORMATION / ROUTING

## Vegas Specifications (cont.)

		2008 Vegas [Vegas 8-Ball]	2008 Vegas Low
D R I V E S Y S T E M	Transmission Type	Manual, 6 Speed Overdrive Constant Mesh [8-Ball - 5 speed]	
	Clutch Type	Wet, Multi-Plate Diaphragm Spring	
	Primary Drive Type	Wet, Gear Drive w/ Torque Compensator	
	Primary Reduction Ratio	1.5:1	
	Final Drive Type / Final Drive Ratio	28mm Carbon Fiber Reinforced Belt / 2.12:1	
	Gear Shift Pattern	1 Down, 5 Up [8-Ball 1 Down, 4 Up]	1 Down, 5 Up
	Internal Gear Ratios 1st	3.15:1	
	2nd	2.03:1	
	3rd	1.53:1	
	4th	1.24:1	
5th	1:1		
6th	.84:1 [8-Ball N/A]		
T I R E S	Front Wheel (Size / Type)	Cast or Billet / 2.15 x 21(inch)	
	Rear Wheel (Size / Type)	Cast or Billet 5.0 x 18 (inch)	
	Front Tire	Dunlop Elite 3 (90/90 21 Tubeless)	
	Rear Tire	Dunlop D417 (180/55-B18 Tubeless)	
	Minimum Tread Depth	.063 in. (1.6mm)	
S U S P E N S I O N	Front Type	43mm Conventional Telescopic Fork	
	Front Travel	5.1 in. (130 mm)	
	Front Tube Diameter	43 mm (1.7 in.)	
	Rear Shock Type	Single, Monotube Gas w/Adjustable Preload	
	Rear Swingarm Type	Forged and Cast Aluminum with Rising Rate Linkage	
	Rear Travel (inches)	3.9 in (100 mm)	3.0 in (75 mm)
L I G H T S	Headlamp (Intl)	High: H-7 55W Low: H-11 35W (International - H4)	
	Brake / Tail Light	Non-Serviceable LED	
	Turn Signal Light	R10W (10W)	
	Instrument Cluster	Indicator Lights: W2.3W (2.3 Watt Wedge Base) Backlighting: T10 (1.7 Watt) Tach: T6.5 (1.7 Watt)	
	Alternator / Battery	38 amp (Approx 450 Watts) / 12V 18AH 320 CCA	
F U S E S	Brake / Headlamp	15 amp fuse	
	Tail Lamp / Flashers / Indicator Lamps / Horn	Auto Cancel Turn Signal System - 15 amp fuse	
	Engine / PCM	15 amp fuse	
	Ignition / Gauges	15 amp fuse	
	Fuel Pump	10 amp fuse	
	Accessory	15 amp fuse	
	Main Circuit Breaker	40 amp circuit breaker	

All specifications are for standard Victory Vegas, Vegas 8-Ball, and Vegas Low models. Specifications may change with the addition of custom order options and / or accessories. Polaris Sales Inc. reserves the right without prior notice to discontinue at any time at its discretion any of the items herein or change specifications or designs without incurring any obligation to the customer.



**GENERAL SPECIFICATIONS-KINGPIN**

**Kingpin Specifications**

		<b>2008 Kingpin [Kingpin 8-Ball]</b>	<b>2008 Kingpin Tour</b>
<b>C A P A C I T I E S &amp; D I M E N S I O N S</b>	Oil Capacity	5.0 Qt (4.75 ltr) (Approximately 4.65 qts.or 4.25 ltr at oil & filter change)	
	Fuel Capacity	4.5 US Gal (17 ltr) (.8 U.S. gal / 3.0 ltr reserve)	
	Fuel Type / Octane Minimum	Premium Unleaded / 92 Octane	
	Wheelbase	65.6 in (166.6 cm)	
	Dry Weight	676 lbs (307 kg) [670 lbs (304 kg)]	741 lbs (336 kg)
	Wet Weight	704 lbs (319 kg) [698 lbs (317 kg)]	769 lbs (349 kg)
	Gross Vehicle Weight Rating	1234 lbs. (560 kg)	
	Maximum Load Capacity*	530 lbs (240 kg) [536 lbs (243 kg)]	465 lbs (211 kg)
	Overall Length	99.9 in (253.7 cm)	102.9 in (261.4 cm)
	Overall Width	38 in (97 cm)	38 in (97 cm)
	Overall Height	49.40 in (125.4 cm)	56.30 in (143 cm)
	Seat Height	26.5 in (67.3 cm)	
	Ground Clearance	5.8 in (14.8 cm)	
	Passenger Capacity	1 [ 8-Ball - 0 ]	1
	Rake / Trail	32.8 Degrees / 5.4 in. (13.8 cm)	
	<b>E N G I N E</b>	Engine Type	Freedom <sup>®</sup> 100/6 V-Twin [8-Ball 100 / 5]
Engine Configuration		50° SOHC Transverse V-Twin 4 Stroke	
Engine Displacement		1634cc / 100 cubic	
Engine Cooling System		Air / Oil	
Compression Ratio		8.7:1	
Compression Pressure		185 - 225 psi (1275 - 1551 kPa)	
Valves Train		4 Valves per cylinder. Hydraulic Lifters & Cam Chain Adjusters (No Adjustment)	
Bore x Stroke		101 x 102 mm	
Starter		Electric / Direct Drive	
Fuel System / Throttle Body		Electronic Fuel Injection / 45 mm	
Exhaust System Type		Dual - Large bore slash cut with common volume	
Lubrication System		Wet Sump	
Spark Plug Type (Gap)		NGK DCPR6E (.032-.036 in. / 0.8-.9 mm)	
Dry Weight (Engine)	265 lbs. (120 Kg)		
<b>B R A K E S</b>	Brake Type (Front / Rear)	Disc / Disc	
	Front Brake	Single 300 x 5 mm Floating Disc/4 P Caliper	Dual 300 x 5 mm Floating Disc/4 P Caliper
	Rear Brake	Single 300 x 5 mm Floating Disc with 2 Piston Caliper	

All specifications are for standard Victory Kingpin, Kingpin 8-Ball, and Kingpin Tour models. Specifications may change with the addition of custom order options and / or accessories. Polaris Sales Inc. reserves the right without prior notice to discontinue at any time at its discretion any of the items herein or change specifications or designs without incurring any obligation to the customer.

\* Maximum load capacity includes the weight of all additional accessories, options, cargo, rider with riding gear, and passenger with riding gear. See GVWR and Vehicle Loading information beginning on page 1.9.



# GENERAL INFORMATION / ROUTING

## Kingpin Specifications (cont.)

		2008 Kingpin [Kingpin 8-Ball]	2008 Kingpin Tour
D R I V E S Y S T E M	Transmission Type	Manual, 6 Speed Overdrive Constant Mesh [8-Ball - 5 speed]	
	Clutch Type	Wet, Multi-Plate Diaphragm Spring	
	Primary Drive Type	Wet, Gear Drive w/ Torque Compensator	
	Primary Reduction Ratio	1.5:1	
	Final Drive Type / Final Drive Ratio	28mm Carbon Fiber Reinforced Belt / 2.12:1	
	Gear Shift Pattern	1 Down, 5 Up [8-Ball 1 Down, 4 Up]	1 Down, 5 Up
	Internal Gear Ratios 1st	3.15:1	
	2nd	2.03:1	
	3rd	1.53:1	
	4th	1.24:1	
5th	1:1		
6th	.84:1 [8-Ball N/A]		
T I R E S	Front Wheel (Size / Type)	Cast or Billet / 3.0 x 18 (inch)	
	Rear Wheel (Size / Type)	Cast or Billet 5.0 x 18 (inch)	
	Front Tire	Dunlop 491 Elite II (130/70 B 18 Tubeless)	
	Rear Tire	Dunlop D417 (180/55-B18 Tubeless)	
	Minimum Tread Depth	.063 in. (1.6mm)	
S U S P E N S I O N	Front Type	43mm Inverted Cartridge Telescopic Fork	
	Front Travel	5.1 in. (130 mm)	
	Front Tube Diameter	43 mm (1.7 in.)	
	Rear Shock Type	Single, Monotube Gas w/Adjustable Preload	
	Rear Swingarm Type	Forged and Cast Aluminum with Rising Rate Linkage	
	Rear Travel (inches)	3.9 in (100 mm)	
L I G H T S	Headlamp (Intl)	High: H-7 55W Low: H-11 35W (International - H4)	
	Brake / Tail Light	Non-Serviceable LED	
	Turn Signal Light	R10W (10W)	
	Instrument Cluster	Indicator Lights: W2.3W (2.3 Watt Wedge Base) Backlighting: T10 (1.7 Watt) Tach: T6.5 (1.7 Watt)	
	Alternator / Battery	38 amp (Approx 450 Watts) / 12V 18AH 320 CCA	
F U S E S	Brake / Headlamp	15 amp fuse	
	Tail Lamp / Flashers / Indicator Lamps / Horn	Auto Cancel Turn Signal System - 15 amp fuse	
	Engine / PCM	15 amp fuse	
	Ignition / Gauges	15 amp fuse	
	Fuel Pump	10 amp fuse	
	Accessory	15 amp fuse	
	Main Circuit Breaker	40 amp circuit breaker	

All specifications are for standard Victory Kingpin, Kingpin 8-Ball, and Kingpin Tour models. Specifications may change with the addition of custom order options and / or accessories. Polaris Sales Inc. reserves the right without prior notice to discontinue at any time at its discretion any of the items herein or change specifications or designs without incurring any obligation to the customer.





**VEHICLE LOADING**

**WEIGHT CAPACITY - TOP BOX AND SADDLEBAGS**

When operating a motorcycle with original equipment or accessory saddlebags and / or top box (trunk):

- Never ride at speeds exceeding 80 mph (129 km/h). Depending on load and weather conditions, the maximum safe operating speed may be less than 80 mph (129 km/h). Saddlebags and / or top box, combined with the lifting or buffeting effects of wind, can make the motorcycle unstable and cause loss of control.
- Distribute weight evenly in each of the saddlebags.
- Do not exceed the maximum cargo weight limit of original equipment or accessory saddlebags or trunk.

Leather, semi-hard, or hard saddlebags weight capacity: 7 lbs (3.2 kg) each

Top box weight capacity: 20 lbs (9 kg)

- Do not exceed the motorcycle's Gross Vehicle Weight Rating (GVWR). Exceeding the weight capacity can reduce stability and handling and cause loss of control.

**LOADING EXAMPLES FOR GROSS VEHICLE WEIGHT RATING (GVWR) - VEGAS®**

**Example 1: Vegas® with no accessories or cargo (GVWR 1151 lbs / 522 kg)**

Item	Weight
Motorcycle - with full capacity of all fluids	686 lbs (311 kg)
Operator - with recommended riding apparel	230 lbs (104 kg)
Passenger - with recommended riding apparel.	165 lbs (75 kg)
<b>Total Weight</b>	<b>1081 lbs (490 kg)</b>

**Example 2: Vegas® with accessory saddlebags (GVWR 1151 lbs / 522 kg)**

Item	Weight
Motorcycle - with full capacity of all fluids	686 lbs (311 kg)
Weight of leather saddlebags and brackets	12 lbs (5.5 kg)
Cargo - optional saddlebags at capacity	14 lbs (6 kg)
Operator - with recommended riding apparel	230 lbs (104 kg)
Passenger - with recommended riding apparel	165 lbs (75 kg)
<b>Total Weight</b>	<b>1107 lbs (502 kg)</b>

**Example 3: Vegas Low™ with no accessories or cargo (GVWR 1134 lbs / 514 kg)**

Item	Weight
Motorcycle - with full capacity of all fluids	679 lbs (308 kg)
Operator - with recommended riding apparel	230 lbs (104 kg)
<b>Total Weight</b>	<b>909 lbs (412 kg)</b>

**NOTE:** As shown in Example 2, the weight of any accessory items (leather saddlebags and brackets) *in addition to* the cargo, must be added to the base weight of the motorcycle. NEVER exceed GVWR.



## GENERAL INFORMATION / ROUTING

---

### LOADING EXAMPLES FOR GROSS VEHICLE WEIGHT RATING (GVWR) - KINGPIN®

#### Example 4: Kingpin® with no accessories or cargo (GVWR 1234 lbs / 560 kg)

Item	Weight
Motorcycle - with full capacity of all fluids	704 lbs (319 kg)
Operator - with recommended riding apparel	230 lbs (104 kg)
Passenger - with recommended riding apparel.	165 lbs (75 kg)
<b>Total Weight</b>	<b>1099 lbs (498 kg)</b>

#### Example 5: Kingpin® Tour with cargo (GVWR 1234 lbs / 560 kg)

Item	Weight
Motorcycle - with full capacity of all fluids	769 lbs (349 kg)
Cargo - top box at capacity	20 lbs (9 kg)
Cargo - saddlebags at capacity	14 lbs (6 kg)
Operator - with recommended riding apparel	230 lbs (104 kg)
Passenger - with recommended riding apparel	165 lbs (75 kg)
<b>Total Weight</b>	<b>1198 lbs (543 kg)</b>

**NOTE:** The weight of any accessory items such as saddlebags and brackets that are not standard equipment, or individual items *in addition* to the cargo, must be added to the base weight of the motorcycle. NEVER exceed GVWR.

## REFINISHING

### Victory Touch-Up and Refinishing Paint

Service Paint products are available in three different sizes and applications. Some paint colors require up to 3 components to create a color. Prices subject to change without notice. Dealer is responsible for freight on paint and paint products.

**.6 ounce bottle:** (Order Multiple of 2) For brush touch-up of small nicks.

**10 ounce aerosol can:** (Order Multiple of 2)

Apply light even coats for best results. Recoat time is from 30-60 minutes or after 4 days of drying to prevent lifting.

**Quarts:** (Sold as each)

For repaint of properly prepared plastic components or metal substrates.

Paint is a high quality acrylic urethane manufactured by U.S. Paint.

Mix as indicated on back of paint can. Paint can be recoated after paint is tack free or has "flashed off".

Paint finish may be wet sanded and buffed after coating has cured.

#### **How to order:**

Authorized Victory Dealers only. Place your order via the dealer web site at:  
[www.polarisdealers.com](http://www.polarisdealers.com) / News Forms & Links / Pure Polaris

**NOTE: There will be a 25% service fee charged for all returns. Polaris dealer will be responsible for return freight**

### Victory detail and finish restorer kits

A Detail Kit (polish, wax, and dressing) and a Restore Kit (polish, and swirl / scuff remover) is available from the Victory parts department for painted surface protection and to remove minor surface imperfections.

**Detail Kit: 2872195** Includes Non-Abrasive Wash, Swirl Remover / Polish, Polywax Final Finish, Vinyl / Rubber Protector, Applicator and Cloth.

**Restore / Polish: 2872192** (12 oz. Aerosol)

### Painting Terms

The following terms describe the general operations referred to in the Paint Color Code chart on page 1.14.

**E-Coat (Factory Applied):** This material is used as a rust protection. It is also used to form a bond between bare metal and the primer or base coat. Full-hide colors (such as black) do not require primer.

**Primer:** Primer is necessary when applying some colors such as Flame Yellow, Sonic Blue, Solar Red, etc. The purpose of a primer coat is to prevent bleed-through or transparency in subsequent color coats.

**Base Coat:** A color paint layer applied under another color or under the clear topcoat to improve color matching and consistency.

**Top Coat:** Outermost layer of paint or clear coat.



## GENERAL INFORMATION / ROUTING

### Paint Colors by Model

Refer to [www.polarisdealers.com](http://www.polarisdealers.com) for more information.

The 9th letter of the model number designate the color. "P" in the 10th position indicates Premium model. Premium models could be equipped with billet wheels, chrome package, HID headlamp, etc.

**NOTE: Refer to page 1.14 for paint color code. Detailed paint ordering information is available on the dealer web site at News, Forms & Links / Pure Polaris / Paint Codes & Part Numbers. Refer to page 1.15 for model number descriptor.**

<b>VEGAS® MODEL YEAR 2008</b>	
<b>Model Number</b>	<b>Model</b>
V08GB26CA, CAP	Vegas, CND, Solid Black
V08GB26DA, DAP	Vegas, 49st, Solid Black
V08GB26LA, LAP	Vegas, CAL, Solid Black
V08GB26CC, CCP	Vegas, CND, Midnight Cherry
V08GB26DC, DCP	Vegas, 49st, Midnight Cherry
V08GB26LC, LCP	Vegas, CAL, Midnight Cherry
V08GB26CD	Vegas, CND, Steel Gray
V08GB26DD	Vegas, 49st, Steel Gray
V08GB26LD	Vegas, CAL, Steel Gray
V08GB26CFP	Vegas, CND, Blue / Black
V08GB26DFP	Vegas, 49st, Blue / Black
V08GB26LFP	Vegas, CAL, Blue / Black
V08GB26CGP	Vegas, CND, Red / Flame
V08GB26DGP	Vegas, 49st, Red / Flame
V08GB26LGP	Vegas, CAL, Red / Flame
V08GB26UG	Vegas, UK, Red / Flame
<b>VEGAS LOW™</b>	
<b>Model Number</b>	<b>Model</b>
V08LB26CA, CAP	Vegas Low, CND, Solid Black
V08LB26DA, DAP	Vegas Low, 49st, Solid Black
V08LB26LA, LAP	Vegas Low, CAL, Solid Black
V08LB26CC, CCP	Vegas Low, CND, Midnight Cherry
V08LB26DC, DCP	Vegas Low, 49st, Midnight Cherry
V08LB26LC, LCP	Vegas Low, CAL, Midnight Cherry
V08LB26UC	Vegas Low, UK, Midnight Cherry
V08LB26CE, CEP	Vegas Low, CND, Boardwalk Blue
V08LB26DE, DEP	Vegas Low, 49st, Boardwalk Blue
V08LB26LE, LEP	Vegas Low, CAL, Boardwalk Blue
<b>VEGAS 8-BALL® MODEL YEAR 2008</b>	
<b>Model Number</b>	<b>Model</b>
V08AB26CA	Vegas 8-Ball, CND, Black
V08AB26DA	Vegas 8-Ball, 49st, Black
V08AB26LA	Vegas 8-Ball, CAL, Black

<b>KINGPIN® MODEL YEAR 2008</b>	
<b>Model Number</b>	<b>Model</b>
V08CB26CA, CAP	Kingpin, CND, Black
V08CB26DA, DAP	Kingpin, 49st, Black
V08CB26LA, LAP	Kingpin, CAL, Black
V08CB26CC	Kingpin, CND, Midnight Cherry
V08CB26DC	Kingpin, 49st, Midnight Cherry
V08CB26LC	Kingpin, CAL, Midnight Cherry
V08CB26CD	Kingpin, CND, Steel Gray
V08CB26DD	Kingpin, 49st, Steel Gray
V08CB26LD	Kingpin, CAL, Steel Gray
V08CB26CHP	Kingpin, CND, Sands Metallic / Black
V08CB26DHP	Kingpin, 49st, Sands Metallic / Black
V08CB26LHP	Kingpin, CAL, Sands Metallic / Black
V08CB26CIP	Kingpin, CND, Black / Flame
V08CB26DIP	Kingpin, 49st, Black / Flame
V08CB26LIP	Kingpin, CAL, Black / Flame
<b>KINGPIN® TOUR MODEL YEAR 2008</b>	
<b>Model Number</b>	<b>Model</b>
V08CD26CA	Kingpin Tour, CND, Black
V08CD26DA	Kingpin Tour, 49st, Black
V08CD26LA	Kingpin Tour, CAL, Black
V08CD26CC	Kingpin Tour, CAN, Midnight Cherry
V08CD26DC	Kingpin Tour, 49st, Midnight Cherry
V08CD26LC	Kingpin Tour, CAL, Midnight Cherry
V08CD26CD	Kingpin Tour, CAN, Steel Gray
V08CD26DD	Kingpin Tour, 49st, Steel Gray
V08CD26LD	Kingpin Tour, CAL, Steel Gray
V08CD26CH	Kingpin Tour, CAN, Sands Metallic / Black
V08CD26DH	Kingpin Tour, 49st, Sands Metallic / Black
V08CD26LH	Kingpin Tour, CAL, Sands Metallic / Black
V08CD26CI	Kingpin Tour, CAN, Black / Flame
V08CD26DI	Kingpin Tour, 49st, Black / Flame
V08CD26LI	Kingpin Tour, CAL, Black / Flame
V08CD26UI	Kingpin Tour, UK, Black / Flame
<b>KINGPIN 8-BALL™ MODEL YEAR 2008</b>	
<b>Model Number</b>	<b>Model</b>
V08PB26CA	Kingpin 8-Ball, CAN, Black
V08PB26DA	Kingpin 8-Ball, 49st, Black
V08PB26LA	Kingpin 8-Ball, CAL, Black
V08PB26UA	Kingpin 8-Ball, UK, Black



## GENERAL INFORMATION / ROUTING

### PAINT COLOR CODES

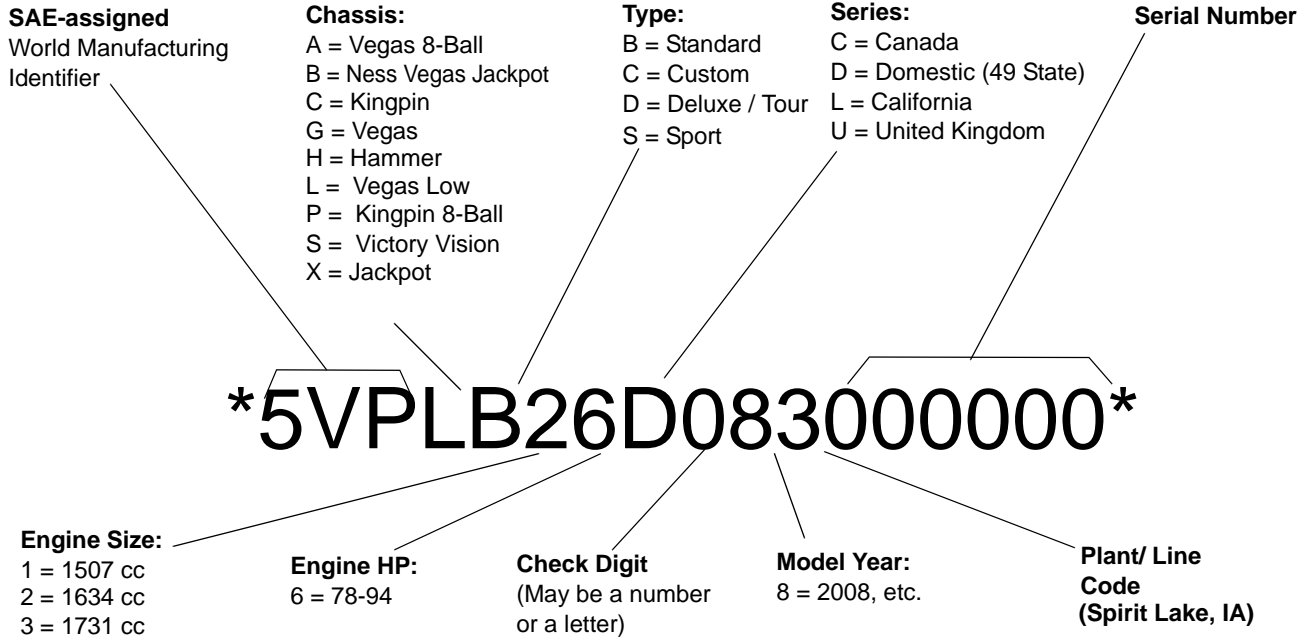
PAINT COLOR: 2008	PAINT CODE	NOTES
Cruiser Black (PHAT)	P-266	
Turbo Silver	P-445	Paint kits require base coat with a topcoat of Clear Metallic (CM)
Flat Black	P-463	
Sunset Red	P-520	
Boardwalk Blue	P-524	Requires P-519 Clear Pearl Topcoat
Ness Metallic Purple	P-543	
Supersteel Gray	P-553	Requires P-519 Clear Pearl Topcoat
Midnight Cherry	P-554	
Sands Metallic	P-555	(Kingpin Only)
Anodized Aluminum	P-565	
Metallic Flake Additive	METALLIC	Add vial of flake to quart of clear base
Silver Undercoater	SU	Base coat only
Antares Red Undercoater	RU	Base coat only
Clear	C	
Clear Metallic	CM	Clear with metal flake added
Clear Pearl	CP	Clear with pearl flake added
UNDERCOATERS (Base Coat Only)	WU, OWU, PWU, VVU	WU=White Undercoater; OWU=Off-White Undercoater; PWU=Pearl White Undercoater; VVU=Victory Violet Undercoater



**VEHICLE INFORMATION**

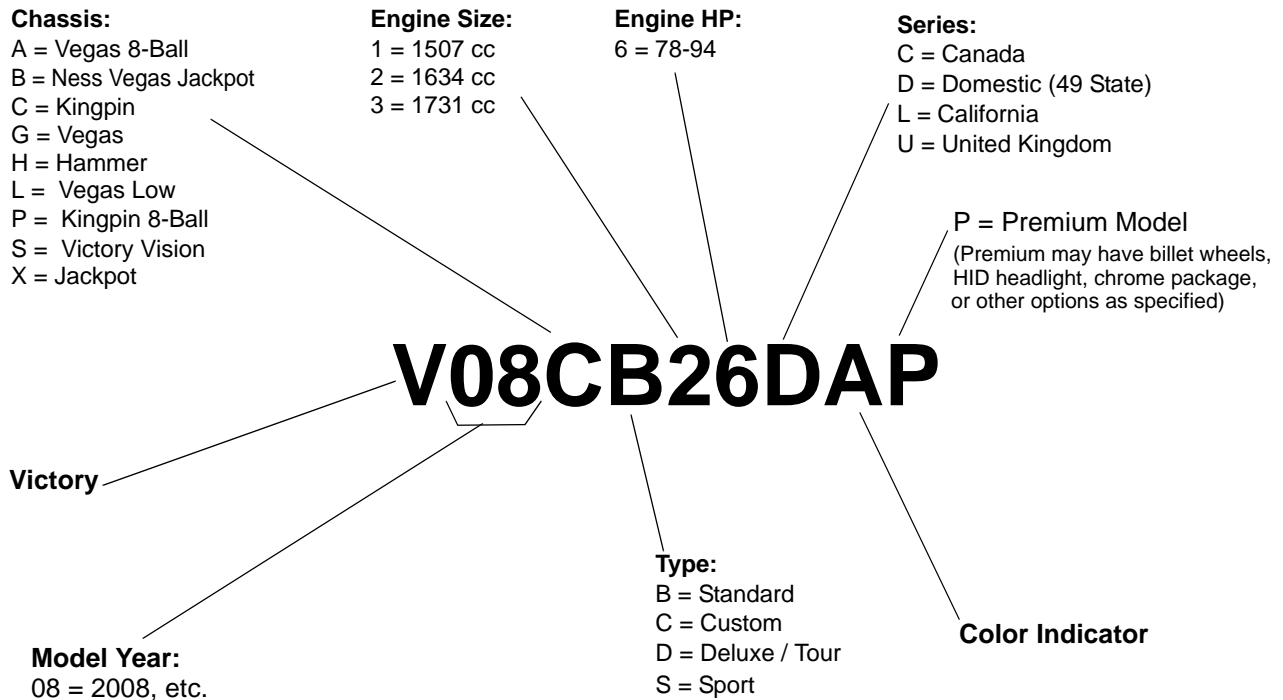
**Vehicle Identification Number (VIN)**

See "VIN NUMBER LOCATION" on page 1.16. for location on the vehicle.



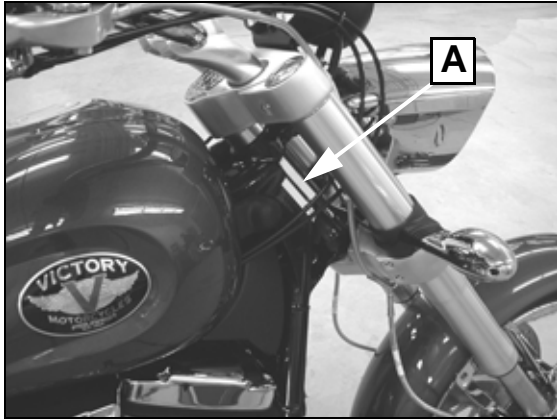
**Model Number**

See "MANUFACTURER LABEL" on page 1.16. for location on vehicle. See "Paint Colors by Model" on page 1.12. for color.



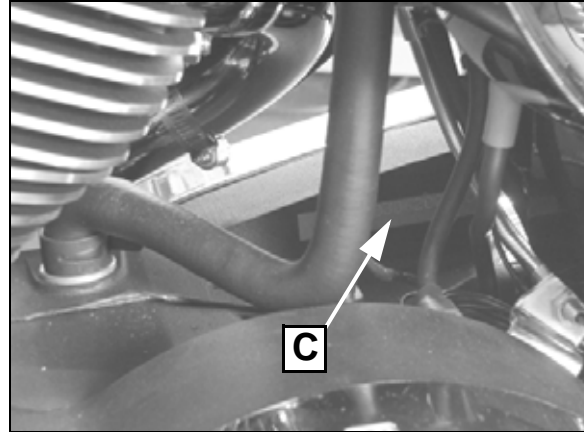
## VIN NUMBER LOCATION

The vehicle identification number (A) is stamped on the right side of the steering head.



## ENGINE NUMBER LOCATION

The engine number (C) is stamped into the right crankcase boss. The stamping identifies the engine model and serial number.



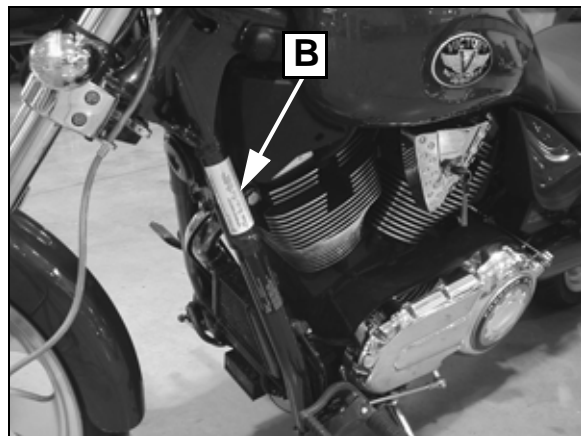
## MANUFACTURER LABEL

The manufacturer label (B) located on the left frame tube contains the following information:

VIN Number

Gross Vehicle Weight Rating (GVWR)

Gross Axle Weight Rating (GAWR)



## KEY IDENTIFICATION NUMBER

The key identification number (D) is stamped on the key tag. If the key and the identification number are lost or misplaced, the lock set (ignition switch / fuel cap) must be replaced.

Key blanks are available from Victory. Locksmiths familiar with the motorcycle industry will be able to cut a replacement key with the key I.D. number and a Victory key blank.

