

1984 - 1998



SERVICE MANUAL

FLH/FLT/FXR EVOLUTION

1984 - 1998

1	Chapter One General Information
2	Chapter Two Troubleshooting
3	Chapter Three Periodic Lubrication, Maintenance & Tune-up
4	Chapter Four Engine
5	Chapter Five Clutch, Primary Drive & Starter Drive
6	Chapter Six 4-Speed Transmission
7	Chapter Seven 5-Speed Transmission
8	Chapter Eight Fuel, Exhaust & Emission Control Systems
9	Chapter Nine Electrical System
10	Chapter Ten Wheels, Hubs & Tires
11	Chapter Eleven Front Suspension & Steering
12	Chapter Twelve Rear Suspension
13	Chapter Thirteen Brakes
14	Chapter Fourteen Cruise Control
15	Chapter Fifteen Body
16	Index
17	Wiring Diagrams

CONTENTS

QUICK REFERENCE DATA.....VII

**CHAPTER ONE
GENERAL INFORMATION.....1**

Manual organization	Special tools
Notes, cautions and warnings	Precision measuring tools
Safety first	Electrical system fundamentals
Serial numbers	Basic service methods
Fasteners	Storage
Shop supplies	Specifications
Basic tools	

**CHAPTER TWO
TROUBLESHOOTING.....36**

Engine principles	Fuel system (fuel-injected models)
Operating requirements	Engine noises
Starting the engine	Engine lubrication
Engine performance	Clutch
Starting system	Transmission
Charging system	Lighting system
Ignition system (carbureted models)	Excessive vibration
Ignition system (fuel-injected models)	Front suspension and steering
Engine management system diagnostic codes	Brake problems
Cruise control system diagnostic codes	Specifications
Fuel system (carbureted models)	

**CHAPTER THREE
PERIODIC LUBRICATION, MAINTENANCE AND TUNE-UP.....73**

Routine safety checks	Tune-up
Tires and wheels	Ignition service
Periodic lubrication	Carburetor adjustments
Periodic maintenance	Specifications

**CHAPTER FOUR
ENGINE.....137**

Service precautions	Pushrods and pushrod covers
Special tools	Lifters and lifter guides
Servicing engine in frame	Oil pump
Engine	Oil filter mount
Rocker arms and rocker arm covers	Oil tank
Cylinder head	Gear case cover and timing gears
Valves and valve components	Crankcase and crankshaft
Cylinder	Engine break-in
Pistons and piston rings	Specifications

**CHAPTER FIVE
CLUTCH, PRIMARY DRIVE.....222**

Primary chain case outer cover	Compensating sprocket
Dry clutch	Primary chain case
Wet clutch	Chain case inspection
Wet clutch assembly	Electric starter drive
Clutch shell. Compensating sprocket and primary drive chain	Starter jackshaft
Clutch shell. Clutch hub and sprocket	Clutch cable
Primary chain and guide	Specifications

**CHAPTER SIX
4-SPEED TRANSMISSION.....282**

Special tools	Transmission case
Shifter assembly	Kickstarter
Transmission shift cover	Starter clutch
Shift forks	Side cover
Transmission shafts	Specifications
Main drive gear	

**CHAPTER SEVEN
5-SPEED TRANSMISSION.....310**

Special tools	Transmission shafts
Production gears	Main drive gear
Shifter assembly	Transmission side cover
Transmission shift cover	Transmission drive sprocket
Shift cam	Transmission case
Shift forks	Transmission oil pan
Transmission side door and transmission shaft	Specifications

**CHAPTER EIGHT
FUEL, EXHAUST AND EMISSION CONTROL SYSTEMS.....353**

Air filter back plate	Fuel tank gauge
Carburetor operation	Fuel tank
Carburetor	Fuel tank venting
Intake manifold	Non-vacuum-operated fuel shutoff valve
Electronic fuel injection (EFI)	Vacuum-operated fuel valve
Depressurizing the fuel system	Fuel pump and fuel filter
Induction module	Fuel tank inspection
Throttle and idle cable	Exhaust system
Choke/enrichener cable	Evaporative emission control system
Fuel tank console	Specifications

**CHAPTER NINE
ELECTRICAL SYSTEM.....432**

Electrical components	Instruments and indicator lights
Battery	Handlebar switches
Charging system	Ignition/lighting switch
Ignition system	Oil pressure switch
Ignition module	Neutral indicator switch testing/replacement
Electronic control module	Brake light switch
Ignition coil	Horn
Spark plug cables	Turn signal and four-way flashers
Starting system	Turn signal module
Starter solenoid	Speedometer speed sensor
Starter relay	Radio, CB and intercom systems
Lighting system	Electrical circuit protection
Headlight	Circuit breakers
Taillight/brake light	Electrical panel
Rear turn signal light	Electrical connectors
Passing light and front turn signal	Wiring diagrams
Rear turn signal	Specifications

**CHAPTER TEN
WHEELS, HUBS AND TIRES.....528**

Motorcycle stands	Rim and laced wheel service
Front wheel	Disc and alloy wheels
Front hub	Wheel balance
Rear wheel	Tires
Rear hub	Tire changing
Driven sprocket assembly	Tire repairs
Drive chain	Tire run out
Drive belt	Specifications
Wheel run out	

**CHAPTER ELEVEN
FRONT SUSPENSION AND STEERING.....564**

Handlebar	Steering head and stem
Front fork	Steering head bearing race
Fork service	Steering play
Inspection	Specifications
Front fork air control and anti-dive system	

**CHAPTER TWELVE
REAR SUSPENSION.....601**

Shock absorbers	Swing arm
Spring preload adjustment (non-air type)	Specifications
Air shock	

**CHAPTER THIRTEEN
BRAKES.....616**

Brake service	Rear brake caliper
Preventing brake fluid damage	Rear master cylinder and reservoir
Front brake pad	Brake hose and line
Front brake caliper	Brake disc
Front master cylinder	Bleeding the system
Rear brake pad	Specifications

**CHAPTER FOURTEEN
CRUISE CONTROL.....674**

- | | |
|---------------------------|-----------------------|
| Cruise control components | Cruise control module |
| Throttle cables | Cruise control switch |
| Control cables | Troubleshooting |
| Servo motor | Specifications |
| Cruise module | |

**CHAPTER FIFTEEN
BODY697**

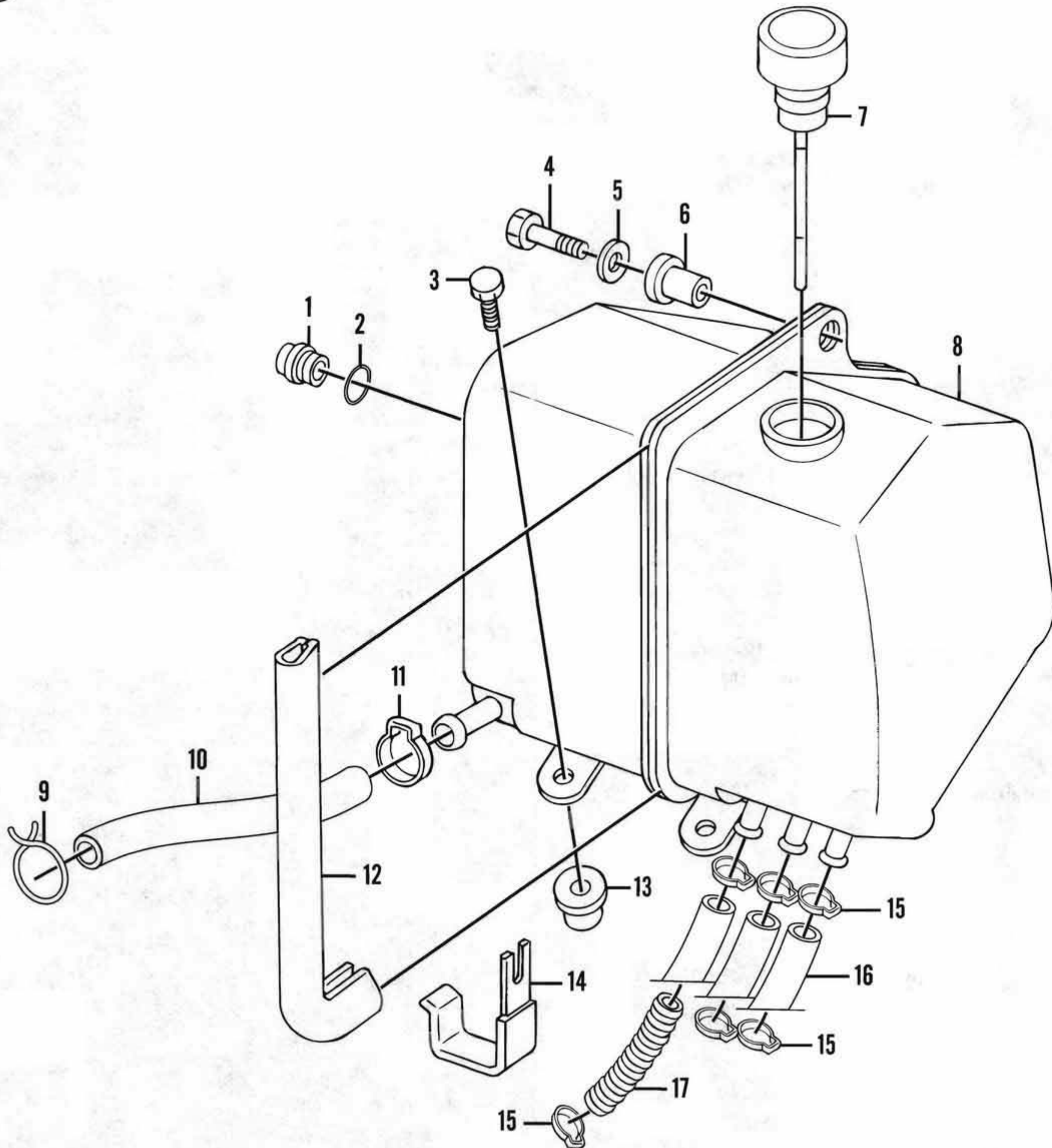
- | | |
|------------------------|----------------------------------|
| Seat | Windshield and headlight nacelle |
| Front fender | Tour-Pak |
| Rear fender | Saddlebags and guards |
| Fairing and windshield | Floorboards |
| Windshield | Specifications |
| Front fairing | |

INDEX.....740

WIRING DIAGRAMS.....747

183

OIL TANK (FXR SERIES MODELS)



- | | |
|--------------------------|------------------|
| 1. Oil level sight glass | 10. Hose (drain) |
| 2. O-ring | 11. Hose clamp |
| 3. Bolt | 12. Trim strip |
| 4. Bolt | 13. Well nut |
| 5. Washer | 14. Clip |
| 6. Well nut | 15. Hose clamp |
| 7. Filler cap/dipstick | 16. Hose |
| 8. Oil tank | 17. Insulator |
| 9. Hose clamp | |