



BY APPOINTMENT TO
HER MAJESTY QUEEN ELIZABETH II
MANUFACTURERS OF RABBIT AND JAGUAR CARS
JAGUAR CARS LIMITED COVENTRY



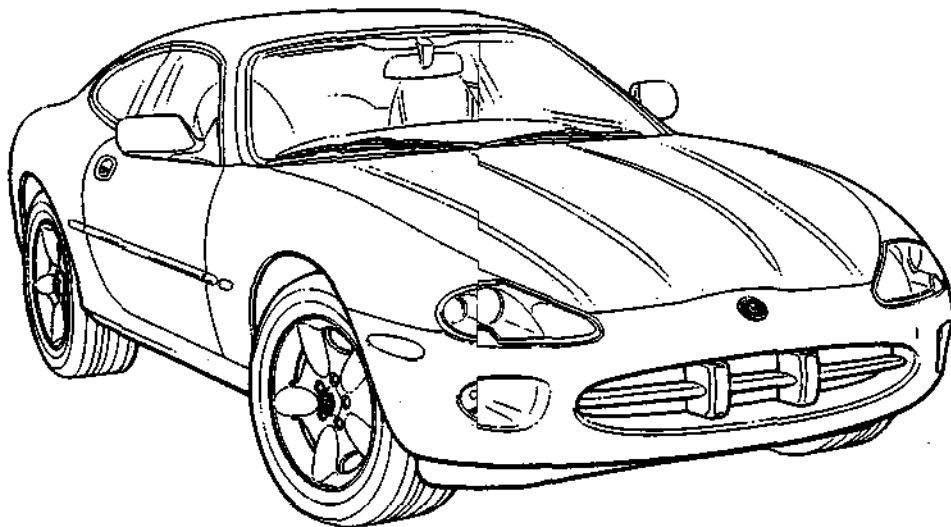
BY APPOINTMENT TO
HER MAJESTY QUEEN ELIZABETH II
THE QUEENSWER
MANUFACTURERS OF RABBIT AND JAGUAR CARS
JAGUAR CARS LTD COVENTRY



BY APPOINTMENT TO
HIS ROYAL HIGHNESS THE PRINCE OF WALES
MANUFACTURERS OF RABBIT AND JAGUAR CARS
JAGUAR CARS LIMITED COVENTRY

JAGUAR XK8

Workshop Manual



Published by Service Communications
Jaguar Cars Limited

Part of set – Publication Part Number – J1M 10 04 14 / 71


JAGUAR

Contents

Contents

This Manual set is divided into Groups (100, 204, 206 etc.) which are divided into Sections (100-02, 204-01 etc.). The Group and Section Numbers and Titles pertinent to this particular Manual are listed below.

Section No.	Section
100-00	General Information
204-00	Suspension System
204-01	Front Suspension
204-02	Rear Suspension
204-04	Wheels and Tires
205-00	Driveline System
205-01	Driveshaft
205-02	Rear Drive Axle / Differential
206-00	Brake System
206-03	Front Disc Brakes
206-04	Rear Disc Brakes
206-06	Hydraulic Brake Actuation
206-09	Anti-Lock Control and Anti-Wheelspin Control
211-00	Steering
211-02	Power Steering
211-04	Steering Column
211-05	Steering Column Switches
303-00	Engine System
307-00	Transmission System
307-01	Automatic Transmission
307-02	Transmission Cooling
307-05	Automatic Transmission External Controls
309-00	Exhaust System
412-00	Climate Control System
412-01	Air Distribution and Filtering
412-02	Heating/Defrosting
412-03	Air Conditioning
412-04	Control Components
413-00	Information, Gauge, and Warning Group
413-01	Instrument Cluster
414-00	Electrical Power Supply System
414-01	Battery, Mounting and Cables
414-02	Generator and Regulator

(continued overleaf)

Contents

Contents (continued)

415-00	In-Vehicle Entertainment
415-01	Receiver and Audio Media Player
415-02	Antenna
415-03	Speaker System
417-00	Lighting System
417-01	Exterior Lighting
417-02	Interior Lighting
418-00	Electrical Distribution and Electronic Control System
418-01	Electrical Wiring and Circuit Protection
501-00	Body System
501-01	Body Structure
501-02	Front End Body Panels
501-03	Body Closures
501-05	Interior Trim and Ornamentation
501-08	Exterior Trim and Ornamentation
501-09	Rear View Mirrors
501-10	Seating
501-11	Glass, Frames, and Mechanisms
501-12	Instrument Panel and Console
501-14	Handles, Locks, Latches and Mechanisms
501-16	Wipers and Washers
501-17	Convertible Top
501-18	Body and Paint
501-19	Bumpers
501-20	Occupant Restraints
600-07	Maintenance

SECTION 100-00 General Information

VEHICLE APPLICATION: X100

SUBJECT	PAGE
DESCRIPTION AND OPERATION	
Safety Notice	100-00-2
Notes, Cautions and Warnings	100-00-2
Copyright Statement	100-00-2
Manual Organization	100-00-3
Repairs and Replacements	100-00-3
Vehicle Specifications	100-00-4
Service Repair Operation Numbering	100-00-4
References to Left- and Right-hand	100-00-4
Vehicle Identification	100-00-5
Engine Number	100-00-6
Automatic Transmission Number	100-00-6
Date of Manufacture (Australia Only)	100-00-6
Special Tools	100-00-7
Torque Specifications	100-00-7
Disconnecting/Connecting the Battery	100-00-7
Use of Control Modules	100-00-7
Functional Test	100-00-7
Protecting the Vehicle	100-00-7
Preparation	100-00-7
Dismantling	100-00-7
Inspection	100-00-8
Safety Precautions	100-00-8
Health Protection	100-00-9
Environmental Protection	100-00-9
Glossary of Terms	100-00-10

DESCRIPTION AND OPERATION

Safety Notice

Appropriate service methods and proper repair procedures are essential for the safe, reliable operation of all motor vehicles, as well as the safety of the person doing the work. This set of manuals provides general directions for accomplishing service and repair work with tested effective techniques. Following them will help assure reliability.

There are numerous variations in procedures, techniques, tools, and parts for servicing vehicles, as well as in the skill of the person doing the work. These manuals cannot possibly anticipate all such variations and provide advice or cautions as to each. Accordingly, anyone who departs from the instructions provided in the manuals must first establish that neither personal safety nor vehicle integrity is compromised from choices of methods, tools or parts.

Notes, Cautions and Warnings

Throughout this set of manuals, important information is highlighted by the use of notes, cautions and warnings. NOTES give additional information on a topic or procedure, CAUTIONS are given to prevent damage to the vehicle, and WARNINGS are given to prevent personal injury.

Copyright Statement

Copyright.© Jaguar Cars Ltd. 1996

All rights reserved. No part of this publication may be reproduced, stored in a retrieval system or transmitted in any form, electronic, mechanical, photocopying, recording or other means, without prior written permission of Jaguar Cars Ltd., Service Department, Browns Lane, Coventry, CV5 9DR, England.

DESCRIPTION AND OPERATION (Continued)

Manual Organization

The set of manuals required to service the X100 family of vehicles comprises:

- Workshop Manual.
- Diagnostic and Test Manual.
- On-board Diagnostics Manual.

The manuals are arranged in sections, each section dealing with a specific part of a vehicle system. For example, Section 412-03 covers air conditioning, which is part of the climate control system.

The first digit of the section number indicates the group. There are six groups:

- 1. General Information.
- 2. Chassis.
- 3. Powertrain.
- 4. Electrical.
- 5. Body and Paint.
- 6. Routine Maintenance.

The second and third digits of the section number indicate the vehicle system.

The last two digits of the section number indicate the part of the system covered by the section.

The Workshop Manual contains specification, description and operation, and removal and installation sub-sections, as required, for each section. The description and operation sub-sections give a brief overview for the relevant section and may be supplemented by more detailed information in the corresponding section in the Diagnostic and Test Manual.

The Diagnostic and Test Manual contains description and operation, diagnosis and testing, and general procedure sub-sections, as required, for each section. The manual covers non-OBD mechanical and electrical components.

The On-board Diagnostics Manual covers all OBD-related components to a legally required level of description, diagnosis and renewal.

Repairs and Replacements

When service parts are required, it is essential that only genuine Jaguar/Daimler replacements are used.

Attention is drawn to the following points concerning repairs and the fitting of replacement parts and accessories:

- Safety features embodied in the vehicle may be impaired if other than genuine parts are fitted. In certain territories, legislation prohibits the fitting of parts which are not produced to the vehicle manufacturer's specification.
- Torque wrench setting figures given in this manual must be strictly adhered to.
- Locking devices, where specified, must be fitted. If the efficiency of a locking device is impaired during removal it must be renewed.
- Owners purchasing accessories while travelling abroad should ensure that the accessory and its fitted location on the vehicle conform to mandatory requirements existing in their country of origin.
- The vehicle warranty may be invalidated by the fitting of other than genuine Jaguar/Daimler parts. All Jaguar/Daimler replacements have the full backing of the factory warranty.
- Jaguar/Daimler dealers are obliged to supply only genuine service parts.

DESCRIPTION AND OPERATION (Continued)

Vehicle Specifications

Purchasers are advised that the specification details set out in these manuals apply to a range of vehicles and not to any specific one. For the specification of a particular vehicle, purchasers should consult their dealer.

The Manufacturers reserve the right to vary their specifications, with or without notice, and at such times and in such manner as they think fit. Major as well as minor changes may be involved, in accordance with the Manufacturer's policy of continuous improvement.

Whilst every effort is made to ensure the accuracy of the particulars contained in these manuals, neither the Manufacturer nor the Dealer, by whom these manuals are supplied, shall in any circumstances be held liable for any inaccuracy or the consequences thereof.

Service Repair Operation Numbering

A master index of numbered operations has been compiled for universal application to all vehicles manufactured by Jaguar Cars Ltd.

Each operation is allocated a number from the master index and cross-refers with an identical number in the Repair Operation Times schedule. The number consists of six digits arranged in three pairs.

Each maintenance procedure in these manuals is described in the sequence necessary to complete the operation in the minimum time, as specified in the Repair Operation Times schedule.

References to Left- and Right-hand

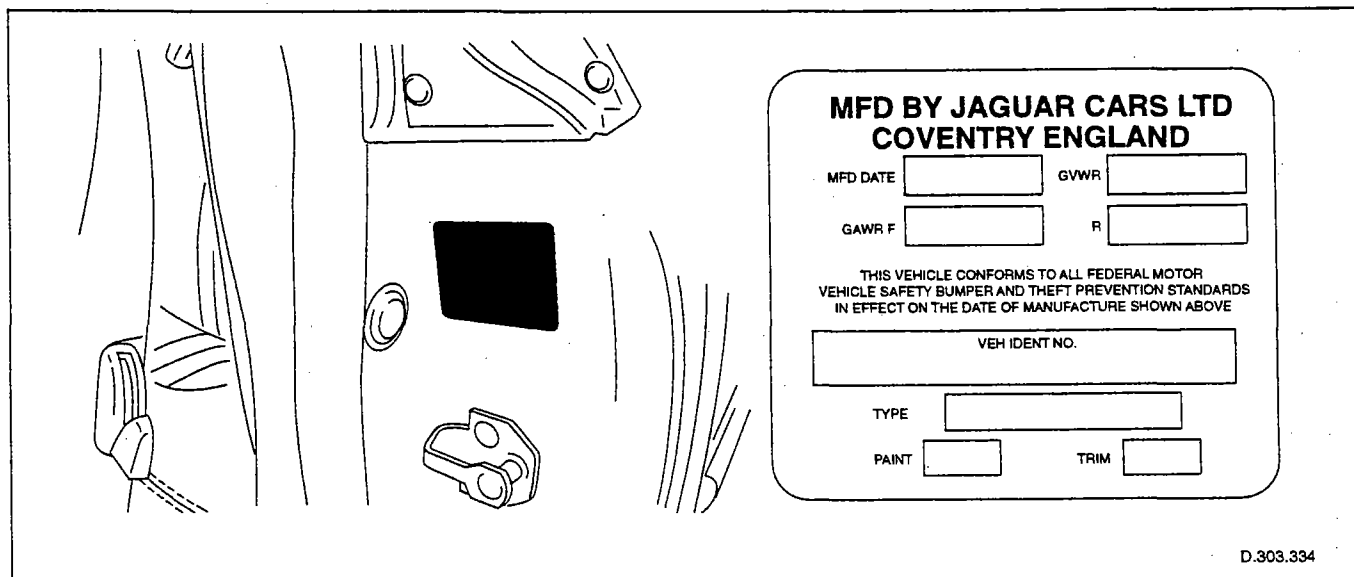
References to the left- or right-hand side of the vehicle are made as if viewing from the driver's seat.

DESCRIPTION AND OPERATION (Continued)

Vehicle Identification

It is essential that the vehicle identification number (VIN) is quoted in all correspondence and when ordering parts. The VIN, and other information according to market, is displayed on a label located on the left-hand door post above the door striker plate, visible when the door is open. The VIN is also displayed on a plate visible through the windshield.

North American Markets:

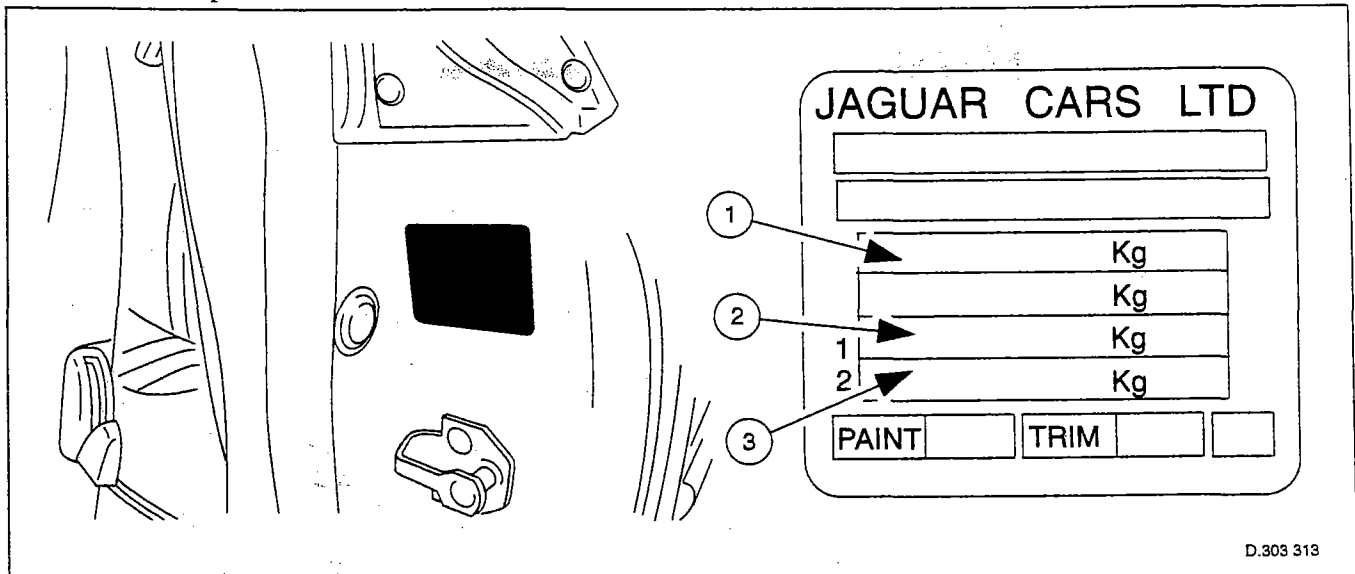


Item	Description
GVWR	Gross vehicle weight rating
GAWR F	Gross front axle weight rating
GAWR R	Gross rear axle weight rating
Paint	Paint code
Trim	Trim code

For north American markets, the label is referred to as the Certification Label and additionally carries the month and year of manufacture. For these markets, the VIN also appears on a bar code label positioned on the left-hand front door shut face edge.

DESCRIPTION AND OPERATION (Continued)

All Markets Except North America:



D.303 313

Item	Description
1	Gross vehicle weight
2	Maximum permitted front axle loading
3	Maximum permitted rear axle loading

Engine Number

The engine number (10 digits) is stamped on the front of the engine block near the thermostat housing. The piston grade reference (eight digits) is also shown.

Automatic Transmission Number

The serial number of the transmission unit is displayed on a metal label or bar code label (where fitted), attached to the left-hand side of the transmission casing.

Date of Manufacture (Australia Only)

The date of manufacture (the Build Date) is defined as the calendar month and year in which the body shell and powertrain are conjoined and the vehicle is driven from the production line. The vehicle has its Build Date displayed on a metal plate located at the top of the battery tray in the trunk.

DESCRIPTION AND OPERATION (Continued)

Special Tools

Any special tools and equipment required to perform a maintenance procedure, are shown at the beginning of each procedure.

Torque Specifications

Torque specifications are shown in maintenance procedure illustrations and also in the torque specifications chart located at the front of the relevant section.

Disconnecting/Connecting the Battery

Owing to the electronic components used on the vehicle, it is important that the battery is disconnected when specified in a maintenance procedure. Attention is drawn to the door drop-glass feature, which will not operate after disconnection of the battery.

When the battery is connected, the specified procedure must be followed, to ensure the correct operation of all vehicle systems.

Use of Control Modules

Control modules may only be used on the vehicle to which they were originally fitted. Do not attempt to use or test a control module on any other vehicle.

Functional Test

On completion of a maintenance procedure, a thorough test should be carried out, to ensure that the relevant vehicle systems are working correctly.

Protecting the Vehicle

Always fit covers to protect the fenders before commencing work in the engine compartment. Cover the seats and carpets, wear clean overalls and wash hands or wear gloves before working inside the vehicle. Avoid spilling hydraulic fluid, antifreeze or battery acid on the paintwork. In the event of spillage, wash off with water immediately. Use polythene sheets in the trunk to protect carpets. Always use the recommended service tool, or a satisfactory equivalent, where specified. Protect temporarily exposed screw threads by replacing nuts or fitting caps.

Preparation

Before disassembly, clean the surrounding area as thoroughly as possible. When components have been removed, blank off any exposed openings using grease-proof paper and masking tape. Immediately seal fuel, oil and hydraulic lines when separated, using plastic caps or plugs, to prevent loss of fluid and the entry of dirt. Close the open ends of oilways, exposed by component removal, with tapered hardwood plugs or readily visible plastic plugs. Immediately a component is removed, place it in a suitable container; use a separate container for each component and its associated parts. Before dismantling a component, clean it thoroughly with a recommended cleaning agent; check that the agent will not damage any of the materials within the component. Clean the bench and obtain marking materials, labels, containers and locking wire before dismantling a component.

Dismantling

Observe scrupulous cleanliness when dismantling components, particularly when parts of the brake, fuel or hydraulic systems are being worked on. A particle of dirt or a fragment of cloth could cause a dangerous malfunction if trapped in these systems. Clean all tapped holes, crevices, oilways and fluid passages with compressed air.